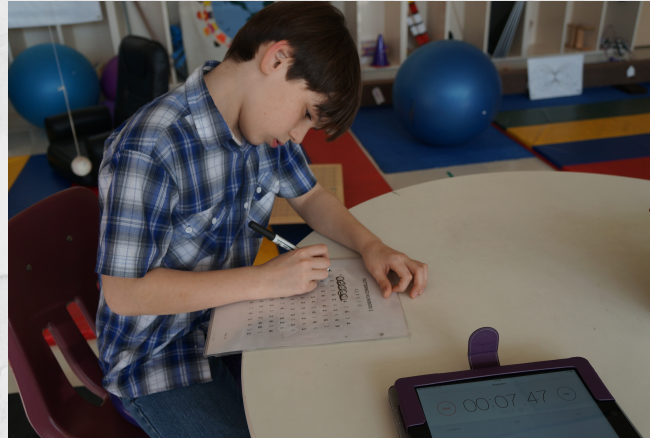


The Secret that stands us apart from other programs is that we focus on the individualized needs of the whole child, and focus on brain development from the bottom up.

Interventions can be provided on-site, at home by the parent with guided assistance, or a combination of the two.



Program duration depends on the individual child, and commitment of parent to follow-through at home.

Additional equipment and online subscriptions would need to be purchased if conducting the program at home.

Ask about our 1-2 week intensive programs.

Lisa Ann de Garcia, MA, MEd., FDN-P
Brain Gym® and BRMT instructor
385.484.1499

lisa@wholechildlearningandwellness.com
www.wholechildlearningandwellness.com



INDIVIDUALIZED INTERVENTION PROGRAM



NOURISH • INTEGRATE • EDUCATE

Problems in reading, for example are not necessarily fixed simply by reading more. Lower areas in the brain and visual systems are usually undeveloped. Addressing those issues first, the reading issues will often times sort themselves out. If there are still gaps to fill afterwards, then cognitive and academic programs can be designed and implemented.

ASSESSMENT

- Sensory Motor
- Cognitive
- Academic

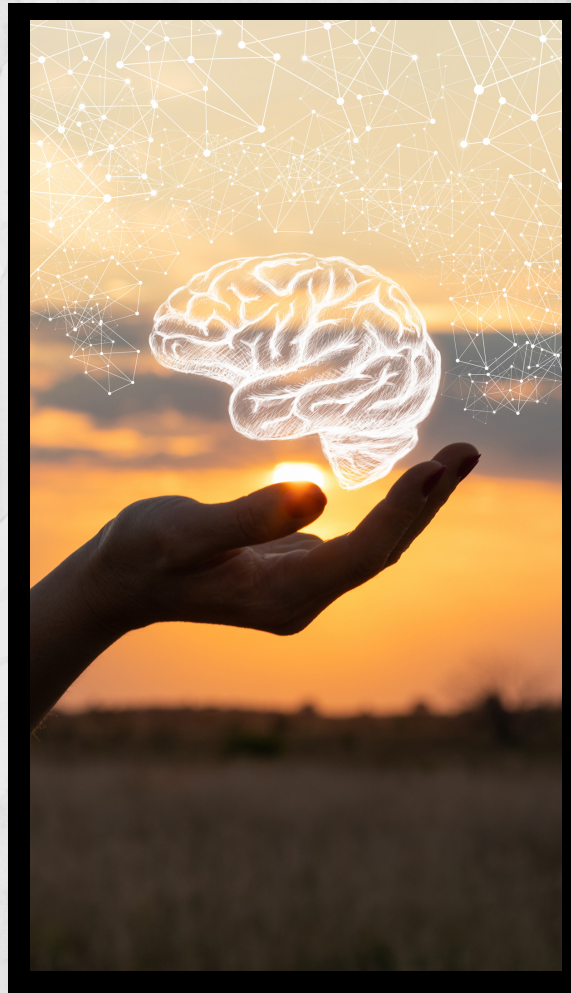
NOURISHING THE BRAIN

- Identify offending foods
- Identify toxins
- Supplementation
- Lab Testing

BRAIN INTEGRATION

- LEAP
- Primitive Reflex Integration
- Brain Gym
- Microcurrent Neurofeedback

We begin with assessing the needs of the student, identifying ways to better nourish the brain, and work on developing the lower areas in the brain. When appropriate, we will identify cognitive and academic activities that match specific areas of concern.



INDIVIDUALIZED INTERVENTION PROGRAM TO ADDRESS SPECIFIC CONCERNS

- Anxiety
- Hypersensitivities
- Focus & Concentration
- Organization
- Motor Processing
- Visual Processing
- Auditory Processing
- Memory
- Academic Support